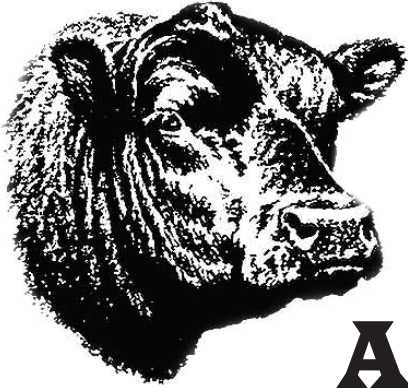


# Lewistown Livestock Auction



**“LAST  
CHANCE”**

**ALL BREEDS BULL SALE  
& PAIR SPECIAL**

12:00 P.M. - Pairs • 1:00 P.M. - Bull Sale

## BULL CONSIGNORS

*Diamond Dot Angus, Hobson*

*Jordan Herman,*

*Bar JR Gelbvieh, Raynesford*

*Meek Family Livestock, Geysers*

*Hill's Ranch Simmentals, Stanford*

*Six Stones Cattle Co., Raynesford*

*Red Flame Ranch, Loma*

*King Colony, Lewistown*

**EXPECTING OVER 40 HEAD OF BULLS**

*Simmental - Angus - Gelbvieh - Red Angus - SimAngus*

**[www.LewistownLivestock.com](http://www.LewistownLivestock.com)**



# "LAST CHANCE" BULL SALE AND PAIR SPECIAL

1

## DIAMOND VALOR 2515

DOB: 8-8-22 TATTOO: 2515 AAA #: 20503796

Act BW -  
Adj 205 -  
205 Ratio -  
Act YW -  
365 Ratio -  
Act SC -

B/R NEW DAY 454 (14675445)  
SIRE: PA VALOR 201 (17326601)  
COR BLACKCAP 6224 Z38 MIDLND (15521794)  
G A R METHOD (18025296)  
DAM: DEEP SOUTH RITA 7022 (19158473)  
WOODSIDE RITA 4P81 OF 1351 (18128705)

- EPDS -

CED ..... +9  
BW ..... +2.9  
WW ..... +92  
YW ..... +156  
Milk ..... +27  
CW ..... +75  
REA ..... +1.72  
MARB ..... +1.39

- Add'l Info -

Angus

Consigned by: Diamond Dot Angus, Hobson, MT • Clint Stevenson

2

## DIAMOND STELLAR 520K

DOB: 8-14-22 TATTOO: 520K AAA #: 20719553

Act BW -  
Adj 205 -  
205 Ratio -  
Act YW -  
365 Ratio -  
Act SC -

SITZ STELLAR 726D (18397542)  
SIRE: LARSEN STELLAR W11 (19799171)  
LARSEN PRINCESS 106U (19134019)  
STILL IN THE ROUGH 201 (17246314)  
DAM: DIAMOND BLACK LADY 889C (18130684)  
DIAMOND BLACK LADY 5U99 (16016469)

- EPDS -

CED ..... -1  
BW ..... +2.0  
WW ..... +73  
YW ..... +126  
Milk ..... +26  
CW ..... +54  
REA ..... +0.66  
MARB ..... +0.43

- Add'l Info -

Angus

Consigned by: Diamond Dot Angus, Hobson, MT • Clint Stevenson

3

## DIAMOND FAST FORWARD K600

DOB: 4-19-22 TATTOO: K600 AAA #: 20423073

Act BW -  
Adj 205 -  
205 Ratio -  
Act YW -  
365 Ratio -  
Act SC -

BASIN PAYWEIGHT 1682 (17038724)  
SIRE: JR FAST FORWARD (18814800)  
JNSR MS QUEEN 453B (18146175)  
BUFORD OKLAHOMA X239 (16701554)  
DAM: REISIG DONNA 606 (18580624)  
REISIG DONNA 110 (16952928)

- EPDS -

CED ..... +2  
BW ..... +2.4  
WW ..... +65  
YW ..... +97  
Milk ..... +30  
CW ..... +40  
REA ..... +0.61  
MARB ..... +1.01

- Add'l Info -

Angus

Consigned by: Diamond Dot Angus, Hobson, MT • Clint Stevenson

4

## DIAMOND RENO 590K

DOB: 4-12-22 TATTOO: 590K AAA #: 20423057

Act BW -  
Adj 205 -  
205 Ratio -  
Act YW -  
365 Ratio -  
Act SC -

SPRING COVE RENO 4021 (17926446)  
SIRE: DIAMOND RENO H175 (19938794)  
RB LADY DENVER 167-428 (17938614)  
JVC CAVALRY V3326 (17784803)  
DAM: JVC COUNTESS C32 (18308140)  
BUFORD COUNTESS V9112 (16539150)

- EPDS -

CED ..... -1  
BW ..... +1.5  
WW ..... +59  
YW ..... +90  
Milk ..... +24  
CW ..... +33  
REA ..... +0.34  
MARB ..... +0.81

- Add'l Info -

Angus

Consigned by: Diamond Dot Angus, Hobson, MT • Clint Stevenson

5

## DIAMOND SOUTHERN CHARM K901

DOB: 4-13-22 TATTOO: K901 AAA #: 20423076

Act BW -  
Adj 205 -  
205 Ratio -  
Act YW -  
365 Ratio -  
Act SC -

BUBS SOUTHERN CHARM AA31 (17853196)  
SIRE: DIAMOND SOUTHERN CHARM 3H31 (19835846)  
DIAMOND LUCY 3865 (17579392)  
ICC FULL CIRCLE 6021 (18495015)  
DAM: DIAMOND BLACKCAP 623G (19465903)  
DIAMOND BLACKCAP D549 (18473428)

- EPDS -

CED ..... +4  
BW ..... +0.4  
WW ..... +65  
YW ..... +104  
Milk ..... +24  
CW ..... +36  
REA ..... +0.36  
MARB ..... +0.88

- Add'l Info -

Angus

Consigned by: Diamond Dot Angus, Hobson, MT • Clint Stevenson

6

## DIAMOND FAST FORWARD 444K

DOB: 4-19-22 TATTOO: 444K AAA #: 20423054

Act BW -  
Adj 205 -  
205 Ratio -  
Act YW -  
365 Ratio -  
Act SC -

BASIN PAYWEIGHT 1682 (17038724)  
SIRE: JR FAST FORWARD (18814800)  
JNSR MS QUEEN 453B (18146175)  
HILLTOP RAINMAKER 1333 (17138736)  
DAM: DIAMOND TROJAN ERICA 124B (17805902)  
DIAMOND TROJAN ERICA 1886 (16918597)

- EPDS -

CED ..... +8  
BW ..... +0.2  
WW ..... +67  
YW ..... +117  
Milk ..... +29  
CW ..... +36  
REA ..... +0.21  
MARB ..... +0.94

- Add'l Info -

Angus

Consigned by: Diamond Dot Angus, Hobson, MT • Clint Stevenson



# "LAST CHANCE" BULL SALE AND PAIR SPECIAL

<b>Angus</b>	<b>7</b>	<b>DIAMOND ROUNDUP 9K59</b>	- EPDS -	- Add'l Info -
	Act BW - Adj 205 - 205 Ratio - Act YW - 365 Ratio - Act SC -	SIRE:  DAM:	DOB:                      TATTOO: 25K5915                      AAA #: PENDING	CED ..... +1 BW ..... +2.3 WW ..... +55 YW ..... +96 Milk ..... +30 CW ..... N/A REA ..... N/A MARB ..... N/A
<b>Consigned by: Diamond Dot Angus, Hobson, MT • Clint Stevenson</b>				

<b>Angus</b>	<b>8</b>	<b>DIAMOND POWERBALL L592</b>	- EPDS -	- Add'l Info -
	Act BW - 81 Adj WW - 650 205 Ratio - Act YW - 365 Ratio - Act SC -	SIRE: <b>SITZ POWERBALL 325G</b> (19436339) SITZ ELSIEMERE 72A (17489065)	DOB: 3-22-23                      TATTOO: I592                      AAA #: COMMERCIAL	CED ..... +5 BW ..... +0.9 WW ..... +70 YW ..... +124 Milk ..... +21 CW ..... N/A REA ..... +0.45 MARB ..... +0.38
<b>Consigned by: Diamond Dot Angus, Hobson, MT • Clint Stevenson</b>				

<b>Angus</b>	<b>9</b>	<b>DIAMOND HOBSON 9L29</b>	- EPDS -	- Add'l Info -
	Act BW - 98 Act 205 - 570 205 Ratio - Act YW - 365 Ratio - Act SC -	SIRE: <b>CAR HOBSON</b> (19486075) DL SONIC 444 (17918412) DIAMOND PERFECTION 481E (18798237)	DOB: 4-7-23                      TATTOO: 9L29                      AAA #: COMMERCIAL	CED ..... N/A BW ..... N/A WW ..... N/A YW ..... N/A Milk ..... N/A CW ..... N/A REA ..... N/A MARB ..... N/A
<b>Consigned by: Diamond Dot Angus, Hobson, MT • Clint Stevenson</b>				

<b>Angus</b>	<b>10</b>	<b>DIAMOND TRADEWIND 0L21</b>	- EPDS -	- Add'l Info -
	Act BW - 87 Act 205 - 666 205 Ratio - Act YW - 365 Ratio - Act SC -	SIRE: <b>DIAMOND TRADEWIND E350</b> (19142351) WMR TRADEWIND 342 (17415946) DIAMOND CLOVA PRIDE 0903 (14389269)	DOB: 3-18-23                      TATTOO: 0L21                      AAA #: COMMERCIAL	CED ..... N/A BW ..... N/A WW ..... N/A YW ..... N/A Milk ..... N/A CW ..... N/A REA ..... N/A MARB ..... N/A
<b>Consigned by: Diamond Dot Angus, Hobson, MT • Clint Stevenson</b>				

<b>Angus</b>	<b>11</b>	<b>DIAMOND BRONC 382F</b>	- EPDS -	- Add'l Info -
	Act BW - 93 Adj 205 - 765 205 Ratio - Act YW - 365 Ratio - Act SC -	SIRE: <b>2XL BRONC 8153</b> (19146105) BALDRIDGE BRONC (18229425) 2XL CLOVA PRIDE 6230 (18605261)	DOB: 3-18-23                      TATTOO: 382F                      AAA #: COMMERCIAL	CED ..... N/A BW ..... N/A WW ..... N/A YW ..... N/A Milk ..... N/A CW ..... N/A REA ..... N/A MARB ..... N/A
<b>Consigned by: Diamond Dot Angus, Hobson, MT • Clint Stevenson</b>				

<b>Angus</b>	<b>1</b>	<b>DIAMOND BRONC 382F</b>	- EPDS -	- Add'l Info -
	Act BW - 65 Adj 205 - 580 205 Ratio - Act YW - 365 Ratio - Act SC - 33.5	SIRE: <b>O C C DO IT ALL 656D</b> (19067876) O C C ZODIAC 655Z (17715632) O C C DIXIE ERICA 827A (17774824)	DOB: 5-8-23                      TATTOO: NA                      AAA #: COMMERCIAL	CED ..... N/A BW ..... N/A WW ..... N/A YW ..... N/A Milk ..... N/A CW ..... N/A REA ..... N/A MARB ..... N/A
<b>Consigned by: Jordan Herman</b>				



# "LAST CHANCE" BULL SALE AND PAIR SPECIAL

<b>Angus</b>	<b>2</b>	<b>DOB: 5-12-23      TATTOO: NA      AAA #: COMMERCIAL</b>	- EPDS -	- Add'l Info -
	Act BW - 60 Adj 205 - 570 205 Ratio - Act YW - 365 Ratio - Act SC - 36	O C C ZODIAC 655Z (17715632) SIRE: <b>O C C DO IT ALL 656D (19067876)</b> O C C DIXIE ERICA 827A (17774824)	CED ..... N/A BW ..... N/A WW ..... N/A YW ..... N/A Milk ..... N/A CW ..... N/A REA ..... N/A MARB ..... N/A	Commercial Bull out of registered cow. Cow and sire can from Redland Angus.
	DAM: <b>REDLAND ANGUS COW</b>		<b>Consigned by: Jordan Herman</b>	

<b>Angus</b>	<b>3</b>	<b>DOB: 5-10-23      TATTOO: NA      AAA #: COMMERCIAL</b>	- EPDS -	- Add'l Info -
	Act BW - 62 Adj 205 - 590 205 Ratio - Act YW - 365 Ratio - Act SC - 32	O C C ZODIAC 655Z (17715632) SIRE: <b>O C C CHANCELLOR 767C (18736728)</b> O C C DIXIE ERICA 706S (15867823)	CED ..... N/A BW ..... N/A WW ..... N/A YW ..... N/A Milk ..... N/A CW ..... N/A REA ..... N/A MARB ..... N/A	Commercial Bull out of registered cow. Cow and sire can from Redland Angus.
	DAM: <b>REDLAND ANGUS COW</b>		<b>Consigned by: Jordan Herman</b>	

<b>Angus</b>	<b>4</b>	<b>DOB: 5-8-23      TATTOO: NA      AAA #: COMMERCIAL</b>	- EPDS -	- Add'l Info -
	Act BW - 68 Adj 205 - 570 205 Ratio - Act YW - 365 Ratio - Act SC - 34.5	O C C ZODIAC 655Z (17715632) SIRE: <b>O C C DO IT ALL 656D (19067876)</b> O C C DIXIE ERICA 827A (17774824)	CED ..... N/A BW ..... N/A WW ..... N/A YW ..... N/A Milk ..... N/A CW ..... N/A REA ..... N/A MARB ..... N/A	Commercial Bull out of registered cow. Cow and sire can from Redland Angus.
	DAM: <b>REDLAND ANGUS COW</b>		<b>Consigned by: Jordan Herman</b>	

<b>Angus</b>	<b>5</b>	<b>DOB: 5-8-23      TATTOO: NA      AAA #: COMMERCIAL</b>	- EPDS -	- Add'l Info -
	Act BW - 655 Adj 205 - 600 205 Ratio - Act YW - 365 Ratio - Act SC - 35	O C C ZODIAC 655Z (17715632) SIRE: <b>O C C CHANCELLOR 767C (18736728)</b> O C C DIXIE ERICA 706S (15867823)	CED ..... N/A BW ..... N/A WW ..... N/A YW ..... N/A Milk ..... N/A CW ..... N/A REA ..... N/A MARB ..... N/A	Commercial Bull out of registered cow. Cow and sire can from Redland Angus.
	DAM: <b>REDLAND ANGUS COW</b>		<b>Consigned by: Jordan Herman</b>	

<b>Angus</b>	<b>6</b>	<b>DOB: 5-3-23      TATTOO: NA      AAA #: COMMERCIAL</b>	- EPDS -	- Add'l Info -
	Act BW - 62 Adj 205 - 570 205 Ratio - Act YW - 365 Ratio - Act SC - 33.5	O C C ZODIAC 655Z (17715632) SIRE: <b>O C C CHANCELLOR 767C (18736728)</b> O C C DIXIE ERICA 706S (15867823)	CED ..... N/A BW ..... N/A WW ..... N/A YW ..... N/A Milk ..... N/A CW ..... N/A REA ..... N/A MARB ..... N/A	Commercial Bull out of registered cow. Cow and sire can from Redland Angus.
	DAM: <b>REDLAND ANGUS COW</b>		<b>Consigned by: Jordan Herman</b>	

<b>Angus</b>	<b>7</b>	<b>DOB: 5-15-23      TATTOO: NA      AAA #: COMMERCIAL</b>	- EPDS -	- Add'l Info -
	Act BW - 68 Adj 205 - 560 205 Ratio - Act YW - 365 Ratio - Act SC - 32	O C C ZODIAC 655Z (17715632) SIRE: <b>O C C DO IT ALL 656D (19067876)</b> O C C DIXIE ERICA 827A (17774824)	CED ..... N/A BW ..... N/A WW ..... N/A YW ..... N/A Milk ..... N/A CW ..... N/A REA ..... N/A MARB ..... N/A	Commercial Bull out of registered cow. Cow and sire can from Redland Angus.
	DAM: <b>REDLAND ANGUS COW</b>		<b>Consigned by: Jordan Herman</b>	



# "LAST CHANCE" BULL SALE AND PAIR SPECIAL

<b>Angus</b>	<b>8</b>	<b>DOB: 5-5-23      TATTOO: NA      AAA #: COMMERCIAL</b>	- EPDS -	- Add'l Info -
	Act BW - 68 Adj 205 - 600 205 Ratio - Act YW - 365 Ratio - Act SC - 36	SIRE: <b>O C C DO IT ALL 656D (19067876)</b> O C C ZODIAC 655Z (17715632) O C C DIXIE ERICA 827A (17774824)	CED ..... N/A BW ..... N/A WW ..... N/A YW ..... N/A Milk ..... N/A CW ..... N/A REA ..... N/A MARB ..... N/A	Commercial Bull out of registered cow. Cow and sire can from Redland Angus.
	DAM: <b>REDLAND ANGUS COW</b>		<b>Consigned by: Jordan Herman</b>	

<b>Angus</b>	<b>8-10</b>	<b>DOB: N/A      TATTOO: N/A      AAA #: COMMERCIAL</b>	- EPDS -	- Add'l Info -
	Act BW - 86 Adj 205 - 825 205 Ratio - Act YW - 365 Ratio - Act SC -	SIRE: <b>TEHAMA TAHOE B767 (17817177)</b> TEHAMA UPWARD Y238 (16760354) TEHAMA MARY BLACKBIRD Y684 (16876258)	CED ..... N/A BW ..... N/A WW ..... N/A YW ..... N/A Milk ..... N/A CW ..... N/A REA ..... N/A MARB ..... N/A	Commercial Bull
	DAM: <b>Commercial Cow</b>		<b>Consigned by: King Colony, Lewistown, MT • Toby</b>	

<b>Gelbvieh</b>	<b>208</b>	<b>DOB: 4-14-22      TATTOO: 208K      AMGV #: 1538405</b>	- EPDS -	- Add'l Info -
	Act BW - 89 Adj 205 - 780 205 Ratio -104 Adj YW - 1073 365 Ratio - 100 Act SC - 37	SIRE: <b>GLDN BKL WRANGLER 023W (1116712)</b> HILLE T504 TREMOR ET (1044747) GOLDEN BUCKLE GELV 023P (906430)	CED ..... +13 BW ..... -0.2 WW ..... +71 YW ..... +95 Milk ..... +30 CW ..... +43 REA ..... +0.77 MARB ..... +0.00	208K is out of a first calf heifer. He is a 99.9% PUREBRED. Top 10% breed EPDs in Milk, Total Maternal, SC & CW. He is a very docile bull with potential to help increase your bottom line. Calve easy, grow fast, be fertile and milk and add carcass traits. Kai does have a small scur that we just noticed.
	DAM: <b>HUDSON JMR 067H (1478059)</b> FELIX JMR 825F (1416644) ELISHA JMR 749E (1386811)		<b>Consigned by: Bar JR Gelbvieh, Raynesford, MT • Jeanne Rankin 406-738-4220</b>	

<b>Gelbvieh</b>	<b>209</b>	<b>DOB: 4-26-22      TATTOO: 209K      AMGV #: 1539345</b>	- EPDS -	- Add'l Info -
	Act BW - 88 Adj 205 - 796 205 Ratio -106 Adj YW - 1015 365 Ratio - 104 Act SC - 41	SIRE: <b>KHR TAYLOR MADE 85D (1358914)</b> BINFORD B81 (1278468) KHR 453B (1290084)	CED ..... +13 BW ..... -2.8 WW ..... +70 YW ..... +93 Milk ..... +35 CW ..... +27 REA ..... +0.74 MARB ..... -0.02	209K is a HOMO POLLED 99.9% PUREBRED EPD Top 4% breed EPDS in BW, Milk, Total Maternal, Hfr Preg & SC. Top 10% in Yield Grade, Stayability, Fat & S Cow. He is dark red, cor- rectly made bull who should calve easy and grow fast with fertility and stayability for replacements and the added carcass values.
	DAM: <b>EVELYN JMR 745E (1386804)</b> KHR 52C (1323205) BETTY JMR 459B (1285130)		<b>Consigned by: Bar JR Gelbvieh, Raynesford, MT • Jeanne Rankin 406-738-4220</b>	

<b>Red Angus</b>	<b>K6</b>	<b>DOB: 2/19/22      TATTOO: K6      ARAA #: 4633959</b>	- EPDS -	- Add'l Info -
	Act BW - 85 Adj 205 - 693 205 Ratio - ET Act YW - 1063 365 Ratio - ET Act SC -	SIRE: <b>5L BOURNE 117-48A (1627789)</b> 5L ADVANTAGE 3267-221Y (1450210) 5L ROXIE 854-117 (1187248)	CED ..... +10 BW ..... -1.1 WW ..... +67 YW ..... +103 CEM ..... +4 CW ..... +17 REA ..... -0.11 MARB ..... +0.66	2 year old. ET calf from embryo bought from Feddes Red Angus. Dam is Feddes Sleek 806, one of Feddes's top donors. Athletic cow bull that will be able to cover lots of country. Good footed and sound.
	DAM: <b>FEDDES BLOCKANA Y130 (1423286)</b> 5L BLAZIN RED 1354-6166 (1115981) FEDDES BLOCKANA 041 (714233)		<b>Consigned by: Meek Family Livestock, Geyser, MT • Jonathan 208-227-3779</b>	

<b>Red Angus</b>	<b>L2</b>	<b>DOB: 2-10-23      TATTOO: L2      ARA #: 4799132</b>	- EPDS -	- Add'l Info -
	Act BW - 74 Adj 205 - 836 205 Ratio - 110 Act YW - 1147 365 Ratio - 105 Act SC -	SIRE: <b>BEIBER CL ATOMIC C218 (3474996)</b> ANDRAS FUSION R236 (1506931) BIEBER DATELINE 308Y (1437039)	CED ..... +18 BW ..... -3.8 WW ..... +81 YW ..... +128 CEM ..... +12 CW ..... +9 REA ..... -0.08 MARB ..... +0.67	Dam is a daughter of my powerful donor cow, Bie- ber Redcap Lady 421D. Calving ease and low birthweight with single digit growth. He matched that with his own individ- ual performance record with a 99 BR, 110WR, 105 YR and 104 REA ratio. His phenotype matches his numbers as well.
	DAM: <b>MEEK REDCAP LADY 421D (1436718)</b> LOOSLI TRIAD 905 (4131160) BIEBER REDCAP LADY 421D (3540078)		<b>Consigned by: Meek Family Livestock, Geyser, MT • Jonathan 208-227-3779</b>	



# "LAST CHANCE" BULL SALE AND PAIR SPECIAL

## L4

### MEEK ATOMIC L4

DOB: 2-11-23 TATTOO: L4 ARAA #: 4799120

Act BW - 90  
Adj 205 - 737  
205 Ratio - 97  
Act YW - 998  
365 Ratio - 100  
Act SC -

SIRE: BEIBER CL ATOMIC C218 (3474996)  
ANDRAS FUSION R236 (1506931)  
BIEBER DATELINE 308Y (1437039)  
BROWN TREMENDOUS Z7326 (1550498)  
DAM: MISS LOOSLI TREMENDOUS B13 (3907217)  
LOOSLI TETON 649 (1104781)

- EPDS -

CED ..... +14  
BW ..... -2.6  
WW ..... +71  
YW ..... +103  
CEM ..... +10  
CW ..... +21  
REA ..... +0.11  
MARB ..... +0.80

- Add'l Info -

L4 had a small injury in January that set him back but he has since healed, caught up to the others and blends right in. He is sound and ready to go. His dam brings a little more BW as we see with his 90 lb but his sire is a proven calving ease, low BW bull. Good growth performance and numbers and good carcass as well.

Consigned by: Meek Family Livestock, Geyser, MT • Jonathan 208-227-3779

## L6

### MEEK ATOMIC L6

DOB: 2-12-23 TATTOO: L6 ARAA #: 4799124

Act BW - 90  
Adj 205 - 743  
205 Ratio - 98  
Act YW - 1078  
365 Ratio - 98  
Act SC -

SIRE: BEIBER CL ATOMIC C218 (3474996)  
ANDRAS FUSION R236 (1506931)  
BIEBER DATELINE 308Y (1437039)  
BIEBER LET'S ROLL B563 (1694879)  
DAM: MEEK TORY 901G (4140814)  
BIEBER TORYANNA 211Y (1237253)

- EPDS -

CED ..... +14  
BW ..... -2.4  
WW ..... +75  
YW ..... +116  
CEM ..... +8  
CW ..... +29  
REA ..... +0.31  
MARB ..... +0.63

- Add'l Info -

Dam is a daughter of a donor cow I bought from Bieber's. L6 dam brings a little more birthweight as we see with his 90 lb but his sire is a proven calving ease, low birthweight bull as we see with his EPD profile. Good growth performance and numbers and good carcass as well.

Consigned by: Meek Family Livestock, Geyser, MT • Jonathan 208-227-3779

## L8

### MEEK REDWOOD L8

DOB: 2-23-23 TATTOO: L8 ARAA #: 4799126

Act BW - 80  
Adj 205 - 726  
205 Ratio - 95  
Act YW - 1081  
365 Ratio - 99  
Act SC -

SIRE: DUFF RED WOOD 1941 (4221872)  
DUFF CORNERSTONE 16136 (3801968)  
DUFF DIXIE ERICA 144 1532 (3972026)  
LOOSLI BOEING 747 (3819995)  
DAM: MEEK REDCAP 902G (4140816)  
BIEBER REDCAP LADY 421D (3540078)

- EPDS -

CED ..... +16  
BW ..... -3.5  
WW ..... +60  
YW ..... +95  
CEM ..... +9  
CW ..... +7  
REA ..... +0.28  
MARB ..... +0.60

- Add'l Info -

Dam a daughter of my powerful donor cow and a donor herself. Sire is an eye appealing bull with loads of dimension and muscle. He produces high capacity cattle with females that are the kind that flourish in low quality forage environments. L8 is a very shapey bull with tons of muscle expression. I believe he will sire calves with plenty of growth, good carcass, and females that are the keeping kind that will be highly productive females.

Consigned by: Meek Family Livestock, Geyser, MT • Jonathan 208-227-3779

## L21

### HILLS L21

DOB: 3-14-23 TATTOO: L21 ASA #: 4293461

Act BW - 98  
Adj 205 - 709  
205 Ratio - 103  
Act YW - 1188  
365 Ratio - 104  
Act SC - 33

SIRE: HILLS JUSTUS J43 (3958586)  
LRS 114G (3562979)  
JARED DAKOTA LEVER J62D (3142952)  
HILLS SURE THING A14 (2746191)  
DAM: HILLS 065R THING 515C (3028435)  
HILLS PROTER 065R 221Z (2808403)

- EPDS -

CED ..... +8.6  
BW ..... +3.1  
WW ..... +78.2  
YW ..... +123.0  
Milk ..... +28.6  
CW ..... +38.3  
REA ..... +0.89  
MARB ..... +0.13

- Add'l Info -

Purebred • Scurred  
Adj REA - 12.21  
Adj IMF - 2.94  
API - 132.8  
TI - 77.6

Consigned by: Hill's Ranch Simmentals, Stanford, MT • Jared 406-868-9869

## L27

### HILLS L27

DOB: 3-17-23 TATTOO: L27 ASA #: 4293467

Act BW - 90  
Adj 205 - 679  
205 Ratio - 99  
Act YW - 1116  
365 Ratio - 98  
Act SC - 37

SIRE: KASSUBE HOME RUN H156 (3834331)  
MR ISHEE GRAND SLAM 807 (3424164)  
LISA ACE 622 STETSON K40B (2877112)  
HILLS MURDOCK D96 (3142814)  
DAM: HILLS SUREBET MURDOCK 065H (3834091)  
HILLS MERIT SUREBET 517C (3028229)

- EPDS -

CED ..... +10.9  
BW ..... +2.4  
WW ..... +73.6  
YW ..... +108.3  
Milk ..... +24.9  
CW ..... +17.8  
REA ..... +0.74  
MARB ..... +0.24

- Add'l Info -

Purebred • Polled  
Adj REA - 12.35  
Adj IMF - 2.96  
API - 132.8  
TI - 77.6

Consigned by: Hill's Ranch Simmentals, Stanford, MT • Jared 406-868-9869

## L54

### HILLS L54

DOB: 3-25-23 TATTOO: L54 ASA #: 4293521

Act BW - 98  
Adj 205 - 723  
205 Ratio - 105  
Act YW - 1125  
365 Ratio - 99  
Act SC - 36

SIRE: DBS GOLIATH 358G (3568743)  
TJ COWBOY UP 529B (3562979)  
DBS MISS EASY MONEY 358A (2731046)  
HILLS SURE THING A14 (2746191)  
DAM: HILLS LACE THING 526C (3028441)  
HILLS ROLEX ACE 872 Z14Z (2808401)

- EPDS -

CED ..... +7.6  
BW ..... +3.4  
WW ..... +77.8  
YW ..... +118.2  
Milk ..... +25.4  
CW ..... +36.8  
REA ..... +0.76  
MARB ..... +0.23

- Add'l Info -

Purebred • Polled  
Adj REA - 10.58  
Adj IMF - 2.82  
API - 133.1  
TI - 78.4

Consigned by: Hill's Ranch Simmentals, Stanford, MT • Jared 406-868-9869



# "LAST CHANCE" BULL SALE AND PAIR SPECIAL

<b>Simmental</b>	<b>L71</b>	<b>HILLS L71</b>	- EPDS -	- Add'l Info -
	DOB: 3-28-23      TATTOO: L71      ASA #: 4293539	TJ COWBOY UP 529B (3562979) SIRE: <b>DBS GUARDIAN 409G</b> (3568725) DBS SUBSTANCE 409C (2964953)	CED .....+12.3 BW .....+1.0 WW .....+61.0 YW .....+91.4 Milk .....+24.0 CW .....+10.9 REA .....+0.58 MARB .....+0.23	Purebred • Polled  Adj REA - 11.53 Adj IMF - 2.79  API - 140.7 TI - 71.9
	Act BW - 92 Adj 205 - 655 205 Ratio - 95 Act YW - 1112 365 Ratio - 97 Act SC - 34	DAM: <b>HILLS LMAN THING 807F</b> (3414500) HILLS SURE THING A14 (2746191) HILLS K21 BDV LMAN 0122X (2634697)		

**Consigned by: Hill's Ranch Simmentals, Stanford, MT • Jared 406-868-9869**

<b>Simmental</b>	<b>L79</b>	<b>HILLS L79</b>	- EPDS -	- Add'l Info -
	DOB: 3-31-23      TATTOO: L79      ASA #: 4293547	TJ COWBOY UP 529B (2891389) SIRE: <b>DBS GOLAIETH 358G</b> (3568743) DBS MISS EASY MONEY 358A (2731046)	CED .....+8.8 BW .....+3.6 WW .....+88.8 YW .....+132.2 Milk .....+24.5 CW .....+27.4 REA .....+0.67 MARB .....+0.26	Purebred • Polled  Adj REA - 13.68 Adj IMF - 1.95  API - 140.4 TI - 84.9
	Act BW - 99 Adj 205 - 769 205 Ratio - 112 Act YW - 1225 365 Ratio - 107 Act SC - 34	DAM: <b>MATT FOCUS HOMBRE M92G</b> (3650049) DBS HOMBRE (3110476) MATT BETTIS FOCUS M50C (3028255)		

**Consigned by: Hill's Ranch Simmentals, Stanford, MT • Jared 406-868-9869**

<b>Simmental</b>	<b>L89</b>	<b>HILLS L89</b>	- EPDS -	- Add'l Info -
	DOB: 4-1-23      TATTOO: L89      ASA #: 4293557	MR ISHEE GRAND SLAM 807 (3424164) SIRE: <b>KASSUBE HOME RUN H156</b> (3834331) LISA ACE 622 STETSON K40B (2877112)	CED .....+11.6 BW .....+2.1 WW .....+72.3 YW .....+111.2 Milk .....+28.5 CW .....+24.3 REA .....+0.53 MARB .....+0.27	Purebred • Polled  Adj REA - 12.39 Adj IMF - 2.51  API - 139.0 TI - 78.1
	Act BW - 90 Adj 205 - 717 205 Ratio - 104 Act YW - 1153 365 Ratio - 101 Act SC - 32	DAM: <b>MATT CWINN STEAM M02H</b> (3834350) MR ISHEE FULL STREAM 741 (3293929) MATT 6SSX CWINN M22Z (2877120)		

**Consigned by: Hill's Ranch Simmentals, Stanford, MT • Jared 406-868-9869**

<b>Simmental</b>	<b>L421</b>	<b>HILLS L421</b>	- EPDS -	- Add'l Info -
	DOB: 3-16-23      TATTOO: L421      ASA #: 4293505	MR ISHEE GRAND SLAM 807 (3424164) SIRE: <b>KASSUBE HOME RUN H156</b> (3834331) LISA ACE 622 STETSON K40B (2877112)	CED .....+11.5 BW .....+2.7 WW .....+80.1 YW .....+125.4 Milk .....+28.7 CW .....+42.3 REA .....+0.41 MARB .....+0.52	3/4 SM 1/4 AN Polled  Adj REA - 9.74 Adj IMF - 4.38  API - 142.2 TI - 83.3
	Act BW - 89 Adj 205 - 704 205 Ratio - 102 Act YW - 1147 365 Ratio - 100 Act SC - 35	DAM: <b>HILLS YETI 1ST CUT G011H</b> (3834307) TJ FIRST CUT 1109C (3022818) HILLS THING YETI G816F (3414789)		

**Consigned by: Hill's Ranch Simmentals, Stanford, MT • Jared 406-868-9869**

<b>Simmental</b>	<b>143</b>	<b>HILLS L421</b>	- EPDS -	- Add'l Info -
	DOB: 1-20-23      TATTOO: N/A      ASA #: N/A	TJ FROSTY 318E (3288449) SIRE: <b>H4 JACK FROST J105</b> (3875194) CLRS GLAMOROUS 912G (3563454)	CED ..... N/A BW .....-0.6 WW .....+79.4 YW .....+120.4 Milk .....+24.5 CW ..... N/A REA ..... N/A MARB ..... N/A	3/4 SM 1/4 AN HB • HP This bull is nicely balanced and can be used on heifers. He has tremendous maternal genetics and his structure/flex is impeccable. His calves should come small and jump on the gain. A pedigree like this makes him a bull that is desired if you want rigor, calving ease, feed efficiency, fertility and growth all in one package.
	Act BW - 69 Adj 205 - 701 205 Ratio - Act YW - 365 Ratio - Act SC -	DAM: <b>HILLS YETI 1ST CUT G011H</b> (3834307) This bull's mother is a top grower by body con. She is sired by the one and only combustible simmental sire that produced some of the best purebred simmental calves in the breed. Cowpower and genetic power runs deep in this female. She is a top performer in producing the right kind of calves. She has great feet and udder structure compared with the feed conversion...the pedigree for this bull is what this bull is. Hill's Ranch Simmentals, Stanford, MT • Jared 406-868-9869		

**Consigned by: Six Stones Cattle Co. Raynesford, MT • Daye Stone 541-660-7837**

<b>Simmental</b>	<b>152</b>	<b>HILLS L421</b>	- EPDS -	- Add'l Info -
	DOB: 2-13-23      TATTOO: N/A      ASA #: N/A	TJ FROSTY 318E (3288449) SIRE: <b>H4 JACK FROST J105</b> (3875194) CLRS GLAMOROUS 912G (3563454)	CED ..... N/A BW .....+1.2 WW .....+85.3 YW .....+129.6 Milk .....+20.4 CW ..... N/A REA ..... N/A MARB ..... N/A	3/4 SM 1/4 AN This calf has been a powerhouse since birth. He will pattern a bit of white on his face and has a huge rib and hip to him. You want powerhouse calves that grow...this dude will sire them. He weaned exceptional and he was fed to ensure he will not melt when turned out in tough country. This bull will be great one if you want to add pounds at weaning.
	Act BW - 69 Adj 205 - 701 205 Ratio - Act YW - 365 Ratio - Act SC -	DAM: <b>HILLS YETI 1ST CUT G011H</b> (3834307)		

**Consigned by: Six Stones Cattle Co. Raynesford, MT • Daye Stone 541-660-7837**



# "LAST CHANCE" BULL SALE AND PAIR SPECIAL

<b>Simmental</b>	<b>K51</b>	<b>RFR K51</b>	DOB: 5-4-23      TATTOO: N/A      ASA #: N/A	- EPDS -	- Addt'l Info -
	Act BW - 86 Adj 205 - 205 Ratio - Act YW - 365 Ratio - Act SC -	SIRE: <b>BHR ELLIS E591E</b> (3510980) DAM: <b>BHR EMA E090</b> (3511036)	FSS MAXIMUS (2767876) ICC MISS POLLED TAKER (2445315) BHR AUSTA SA Y575 (2609766) BHR ALBA X359 (2628904)	CED ..... N/A BW ..... N/A WW ..... N/A YW ..... N/A Milk ..... N/A CW ..... N/A REA ..... N/A MARB ..... N/A	Horned Can be registered. Current on vaccinations, fertility teseted on 5/4/24 and ready to go to work.
	<b>Consigned by: Red Flame Ranch, Loma, MT • Sean Sayers</b>				

<b>Simmental</b>	<b>K56</b>	<b>RFR K56</b>	DOB: 5-5-23      TATTOO: N/A      ASA #: N/A	- EPDS -	- Addt'l Info -
	Act BW - 84 Adj 205 - 205 Ratio - Act YW - 365 Ratio - Act SC -	SIRE: <b>BHR ELLIS E591E</b> (3510980) DAM:	FSS MAXIMUS (2767876) ICC MISS POLLED TAKER (2445315)	CED ..... N/A BW ..... N/A WW ..... N/A YW ..... N/A Milk ..... N/A CW ..... N/A REA ..... N/A MARB ..... N/A	Horned Can be registered. Current on vaccinations, fertility teseted on 5/4/24 and ready to go to work.
	<b>Consigned by: Red Flame Ranch, Loma, MT • Sean Sayers</b>				

<b>Simmental</b>	<b>K57</b>	<b>RFR K57</b>	DOB: 5-5-23      TATTOO: N/A      ASA #: N/A	- EPDS -	- Addt'l Info -
	Act BW - 86 Adj 205 - 205 Ratio - Act YW - 365 Ratio - Act SC -	SIRE: <b>BHR ELLIS E591E</b> (3510980) DAM:	FSS MAXIMUS (2767876) ICC MISS POLLED TAKER (2445315)	CED ..... N/A BW ..... N/A WW ..... N/A YW ..... N/A Milk ..... N/A CW ..... N/A REA ..... N/A MARB ..... N/A	Horned Can be registered. Current on vaccinations, fertility teseted on 5/4/24 and ready to go to work.
	<b>Consigned by: Red Flame Ranch, Loma, MT • Sean Sayers</b>				

<b>Simmental</b>	<b>064</b>	<b>RFR K57</b>	DOB: N/A      TATTOO: N/A      ASA #: N/A	- EPDS -	- Addt'l Info -
	Act BW - 76 Adj 205 - 825 205 Ratio - Act YW - 365 Ratio - Act SC -	SIRE: <b>WLE UNO MAS X549</b> (2532016) DAM: Commercial Cow	CNS DREAM ON L186 (2144976) SHAWNEE MISS 770P (2239634)	CED ..... N/A BW ..... N/A WW ..... N/A YW ..... N/A Milk ..... N/A CW ..... N/A REA ..... N/A MARB ..... N/A	Halfblood
	<b>Consigned by: King Colony, Lewistown, MT • Toby</b>				

<b>Simmental</b>	<b>960</b>	<b>RFR K57</b>	DOB: N/A      TATTOO: N/A      ASA #: N/A	- EPDS -	- Addt'l Info -
	Act BW - 84 Adj 205 - 840 205 Ratio - Act YW - 365 Ratio - Act SC -	SIRE: <b>WLE UNO MAS X549</b> (2532016) DAM: Commercial Cow	CNS DREAM ON L186 (2144976) SHAWNEE MISS 770P (2239634)	CED ..... N/A BW ..... N/A WW ..... N/A YW ..... N/A Milk ..... N/A CW ..... N/A REA ..... N/A MARB ..... N/A	Halfblood
	<b>Consigned by: King Colony, Lewistown, MT • Toby</b>				